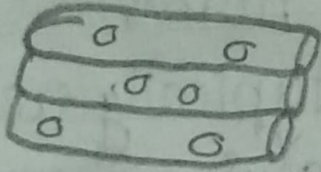


Skeletal Muscle (Main features)

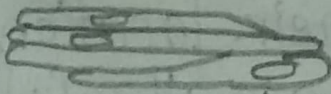
- Fibers: striated, tubular & multi nucleated
- Voluntary
- Usually attached to skeleton



Types of Cells

Smooth muscle (Main features)

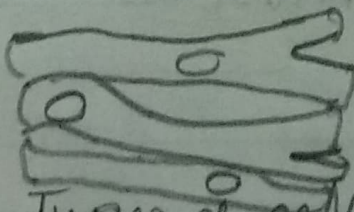
- Fibers: non striated, spindle shaped & uninucleated
- Involuntary
- Usually covering wall of internal organs



Types of cells

Cardiac Muscle

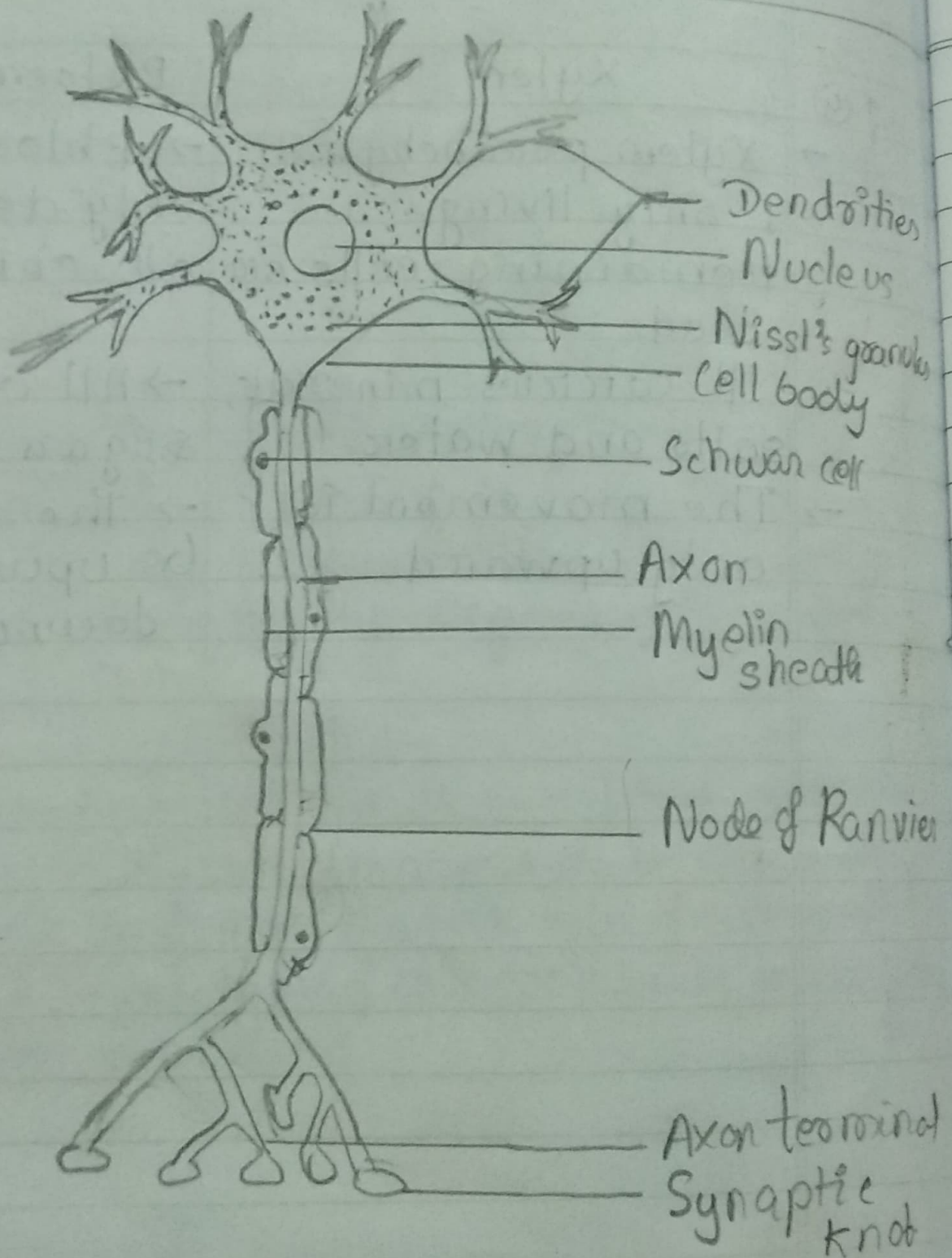
- Fibers: striated, branched & uninucleated
- Involuntary
- Only covering walls of the heart



Types of cells

Ce

NERVOUS TISSUE



Structure of a Neuron